



# Roswell Recycling Center

Roswell  
Recycling Center  
11570 Maxwell Road  
Alpharetta, GA 30004  
*Phone:* 770-442-8822  
*Fax:* 770-442-0963  
[www.roswellgov.com](http://www.roswellgov.com)

## MATERIALS

## WHAT TO RECYCLE

<i>Large Metal</i>	Grills, lawn mowers (fluids removed), appliances*, etc.
<i>Aluminum</i>	Aluminum cans, aluminum pie plates and clean foil
<i>Small Metal</i>	Steel cans (rinsed), wire coat hangers, screws, nails, punctured helium tanks
<i>Glass Bottles</i>	All glass food and beverage packaging containers – colorless, brown, green and blue (rinsed with all lids & corks removed)
<i>Electronics</i>	Computers, monitors*, printers, peripherals, televisions* (no rear projection or wood console), stereos and speakers (no wood cases), and all telephones.
<i>Cardboard</i>	Corrugated cardboard such as moving and shipping boxes, single layer cardboard such as cereal, gift and shoe boxes, all paper bags
<i>Plastic</i>	Rinsed plastic food and beverage containers #1 through #7 (except polystyrene #6), plastic bags and bubble wrap
<i>Newspaper</i>	Newspaper including any inserts that came in the newspaper, white packing paper



### Services offered at the Roswell Recycling Center

- Tours
- Community Service hours
- Goodwill donation trailer on site

### Services for Roswell Residents only:

- Away From Home event recycling bins
- Paper shredding
- Fluorescent bulb recycling (tubes or u-shaped)
- Latex/Oil-based Paint Collection
- Polystyrene (call for details)



## MATERIALS

## WHAT TO RECYCLE

*Magazines & Phonebooks*

Magazines, catalogs, telephone books (remove plastic wrapping or bags and magnets)

*Text Books*

Hard cover and soft cover books

*Office Paper*

Most paper found on the top of a desk including copy paper (flat or shredded) and junk mail

*Miscellaneous*

Cell phones, rechargeable and lead acid batteries, tires\* (no more than 4 vehicle tires at one time), motor oil, antifreeze, liquid waste vegetable oil, printer cartridges, books for the Friends of the Alpharetta Library book sale, Eye glasses for the Roswell Lions club, Brita filters, pitchers, water bottles, all Brita packaging, Oral care products including empty toothpaste tubes and caps, toothbrushes, floss containers, and all associated packaging, American flags.

## UNACCEPTABLE

Food contaminated cardboard such as pizza boxes, coated cardboard cartons such as milk or juice cartons, aseptic packaging such as boxes of soup stock, aerosol spray cans of any kind, household chemicals (other than latex/oil-based paint), rear projection or wood console televisions, small appliances, molded plastics such as toys, buckets, laundry baskets, garbage cans, CD's, DVD's, VHS Tapes (for VCR), glass other than food or beverage packaging such as drinking glasses, vases, candle jars, mirrors, window glass, perfume bottles, make up jars, air freshener containers, glass table tops, pyrex baking dishes, china, light bulbs, ceramics such as plates and coffee mugs.

\*denotes fee for non-Roswell residents

**Roswell residents must present a photo ID showing a Roswell address to receive free services.**

For more information, please call 770-442-8822

## RECYCLING SIGNS



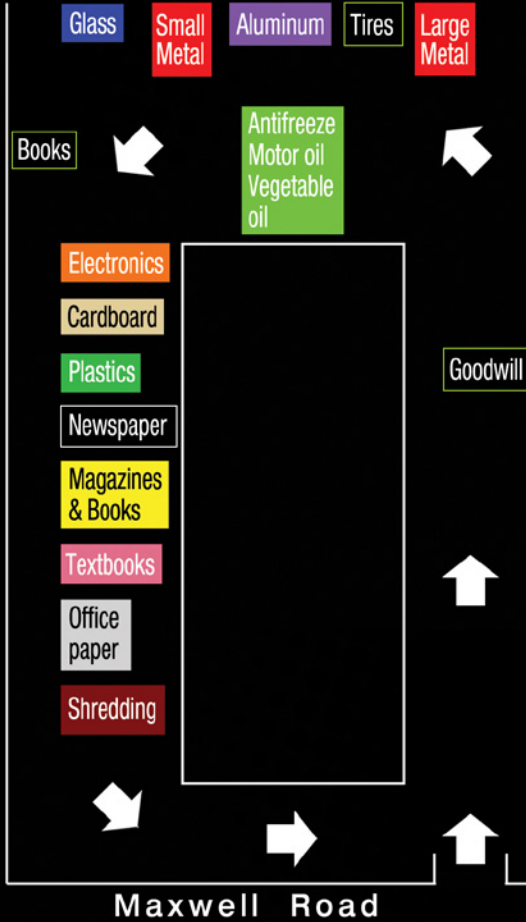
# Hours of Operation

Tuesday-Thursday  
8:30 AM to 5:30 PM  
Friday 8:30 AM to 5 PM  
Saturday 8 AM to 5 PM  
Closed Sunday & Monday

## Closed for Holidays:

New Year's Day  
Martin Luther King, Jr. Day  
President's Day  
Memorial Day  
Fourth of July  
Labor Day  
Veteran's Day  
Thanksgiving Day (& day after)  
Christmas Day

Hembree Road



## Directions

### Georgia 400 South:

Exit Haynes Bridge road and turn left at the end of the exit ramp. At the second traffic light turn left on to Morrison Parkway/Westside Parkway. Turn right at the second traffic light onto Hembree Road. Turn right at the first light onto Maxwell Road and the Recycling Center is on your immediate left.

### Georgia 400 North:

Exit Haynes Bridge Road and turn left at the end of the exit ramp. At the third traffic light turn left on to Morrison Parkway/Westside Parkway. At this point, Follow the above directions.

### Downtown Roswell:

North Alpharetta Street (Highway 9). Turn right onto Hembree Road. At the second traffic light, turn left onto Maxwell Road. The Recycling Center is on your immediate left.

Like us on Facebook:   
[www.facebook.com/RoswellRecyclingCenter](http://www.facebook.com/RoswellRecyclingCenter)



# KRB

KEEP ROSWELL BEAUTIFUL.ORG

Promote a healthy environment...

Keep Roswell Beautiful

A non-profit group of concerned Roswell citizens and businesses that are dedicated to improving the quality of the environment in Roswell



Mayor Jere Wood

***Councilmembers:***

Marcelo Zapata

Mike Palermo

Donald J. Horton

Lori Henry

Jerry Orlans

Nancy Diamond

***Interim City Administrator:***

Michael Fischer

***Director of Public Works/  
Environmental Department:***

Dan Skalsky